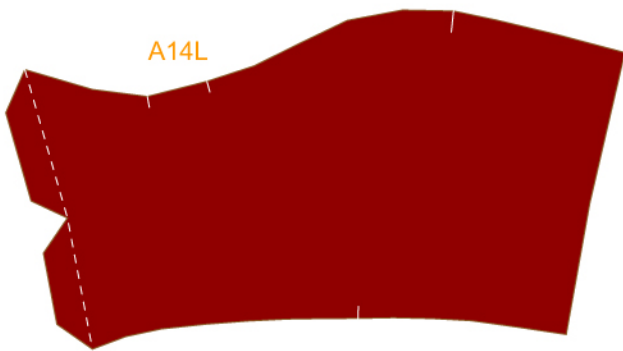
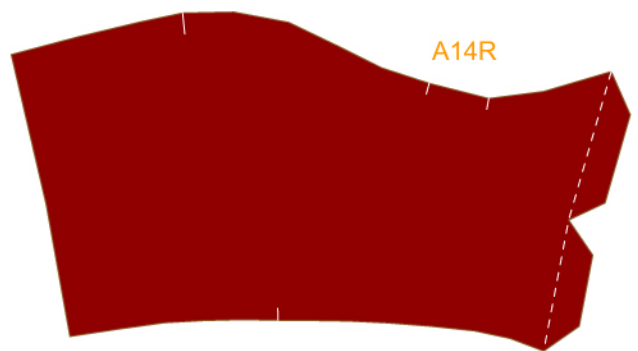


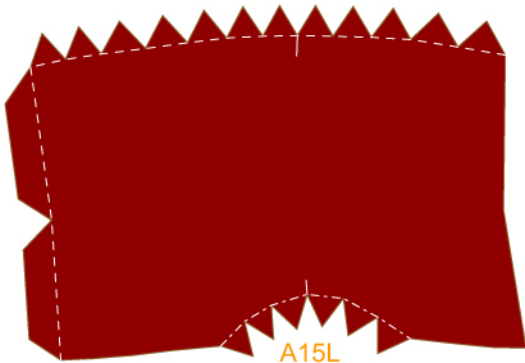
A13



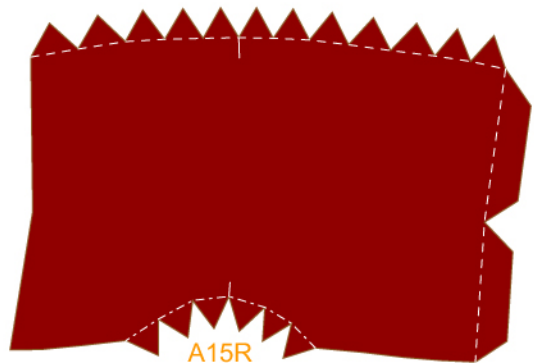
A14L



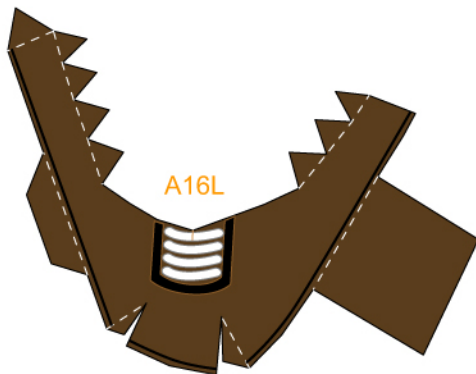
A14R



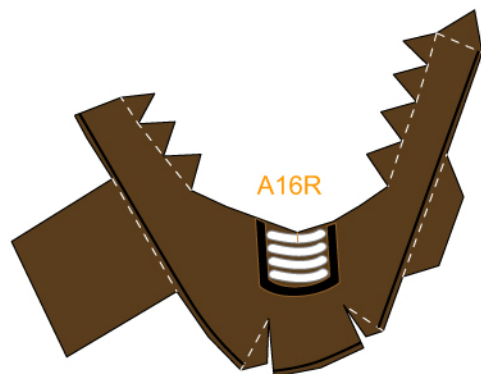
A15L



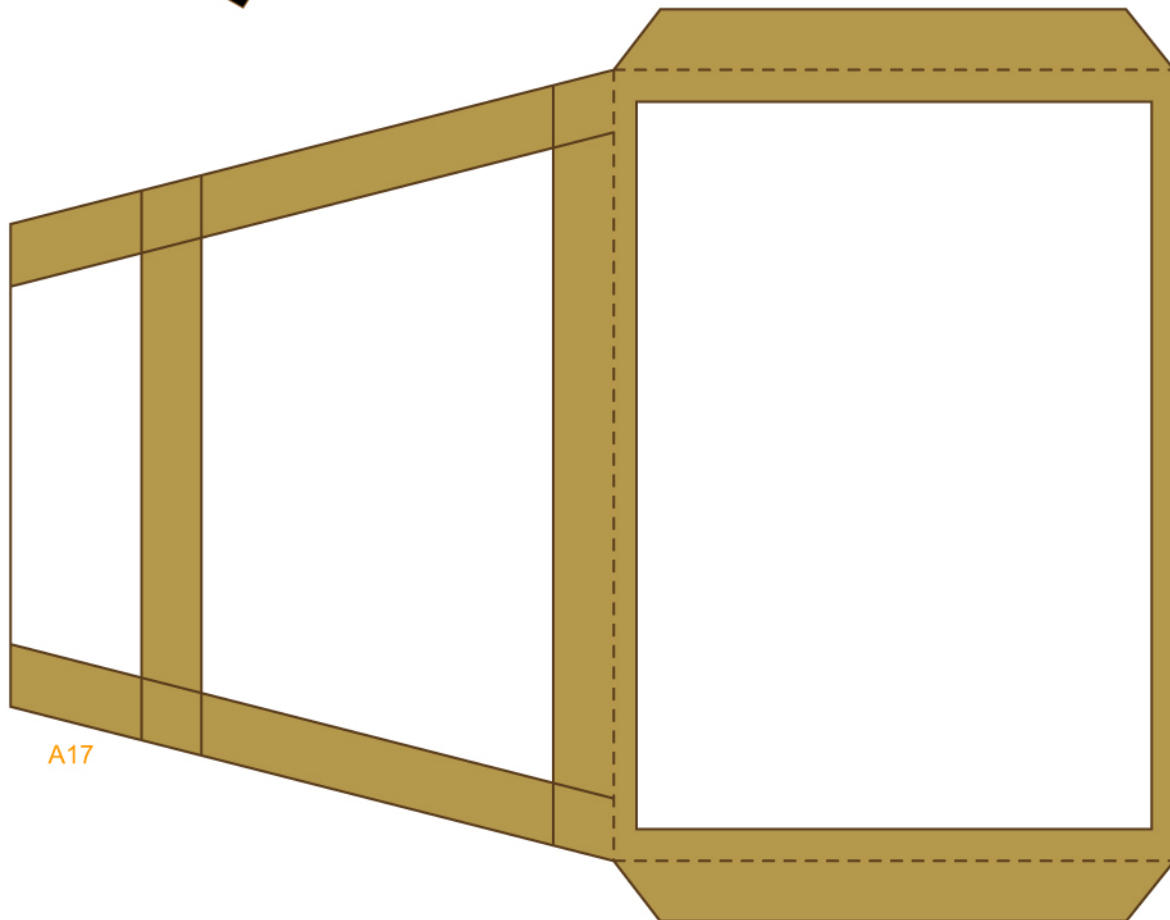
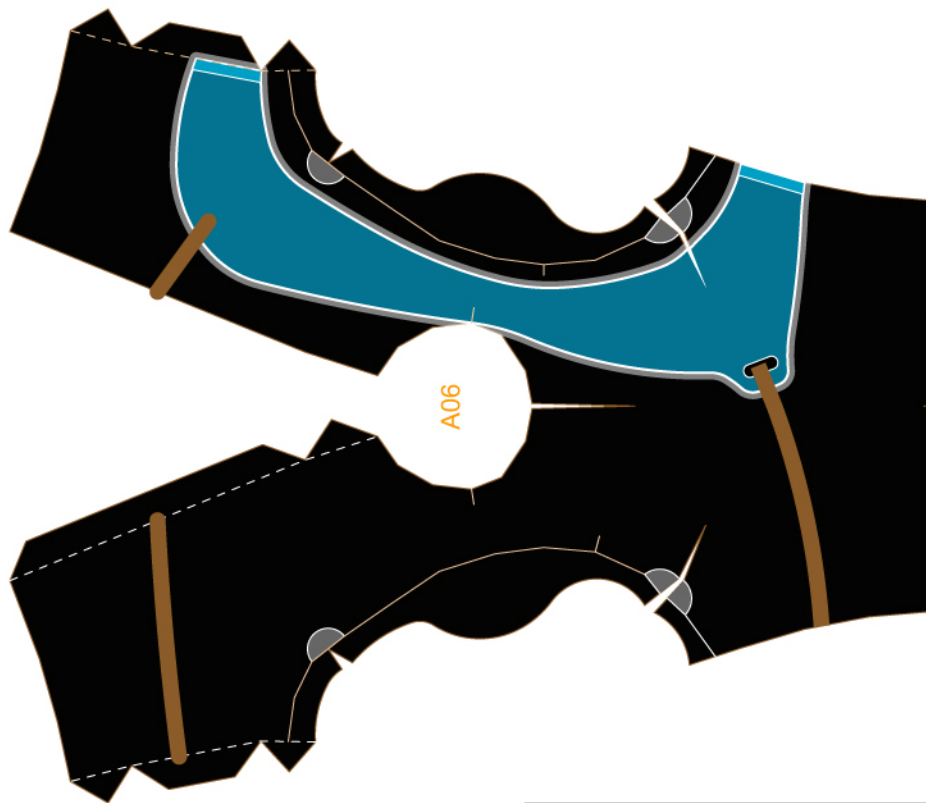
A15R

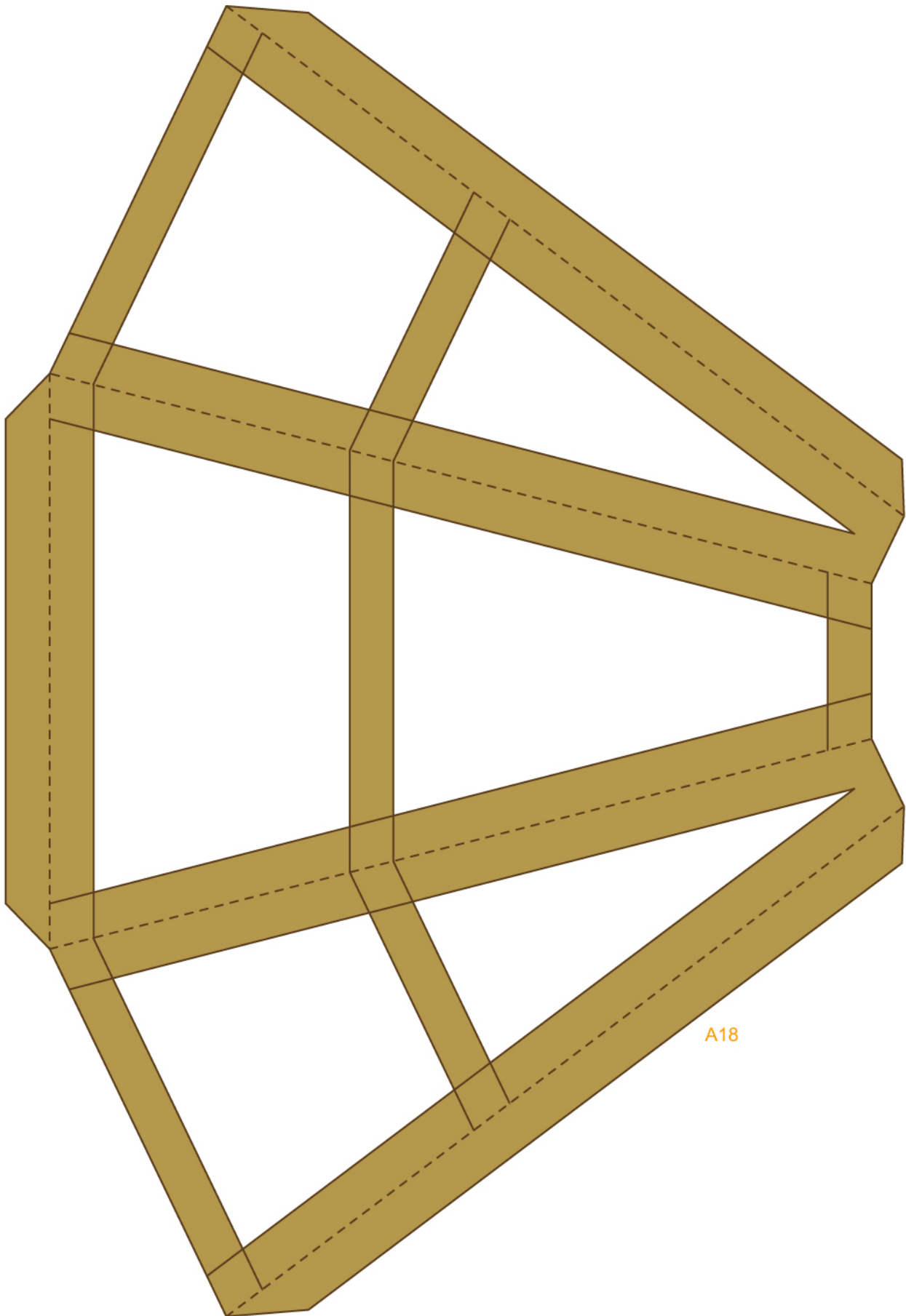


A16L

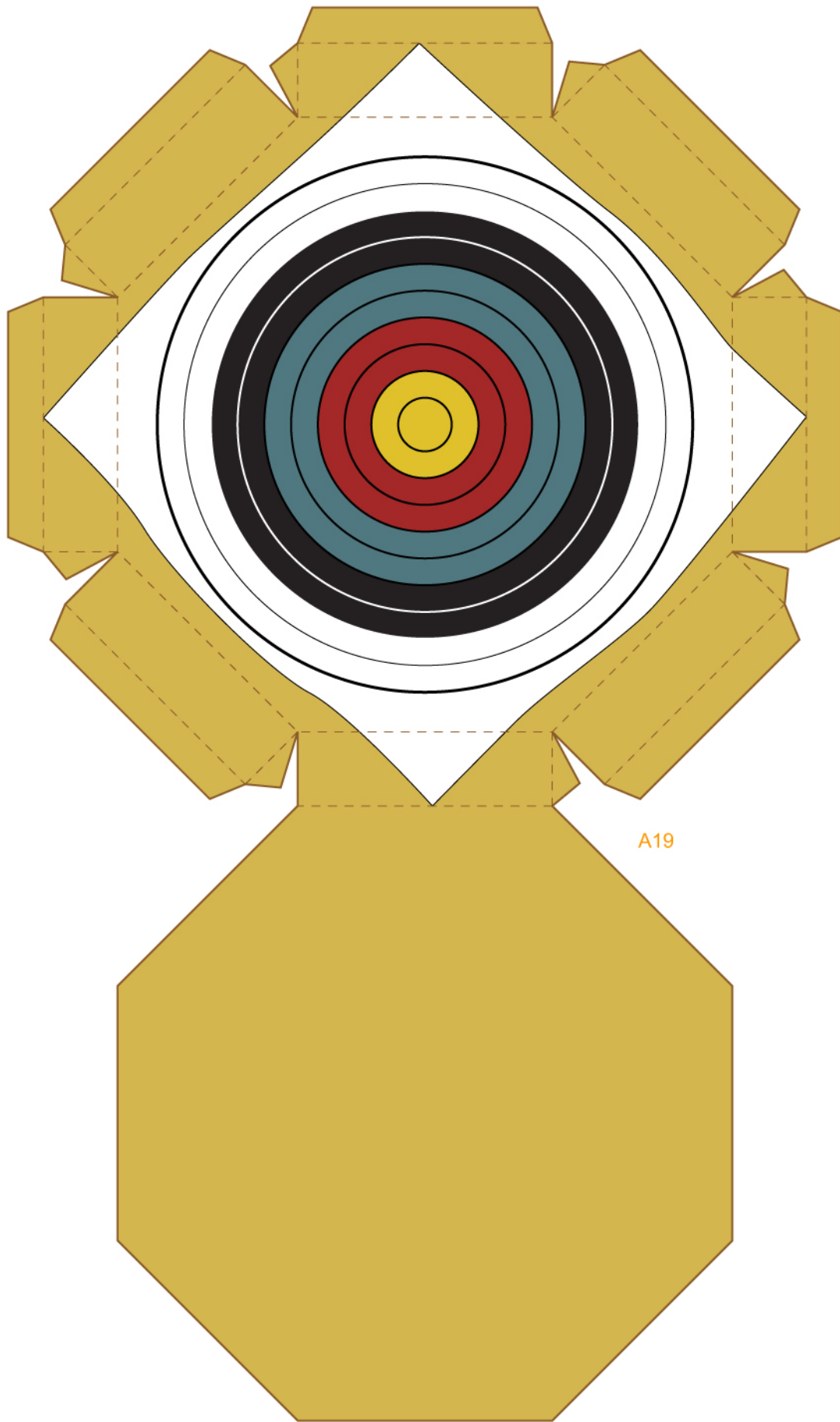


A16R

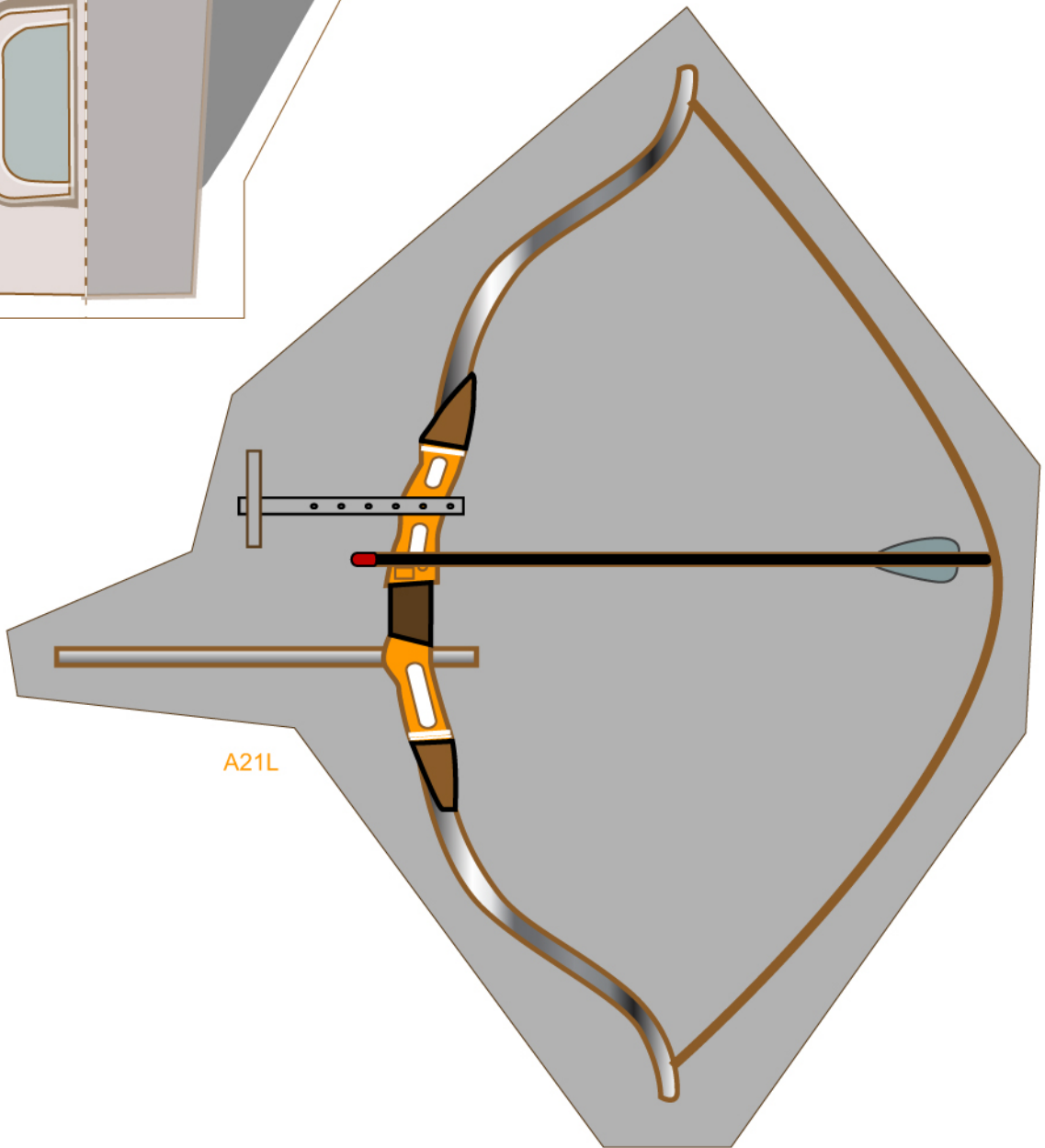
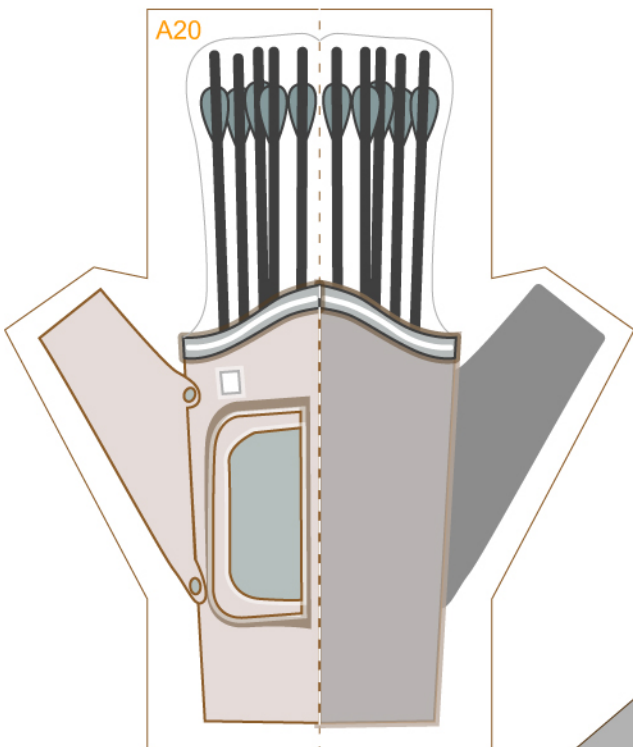


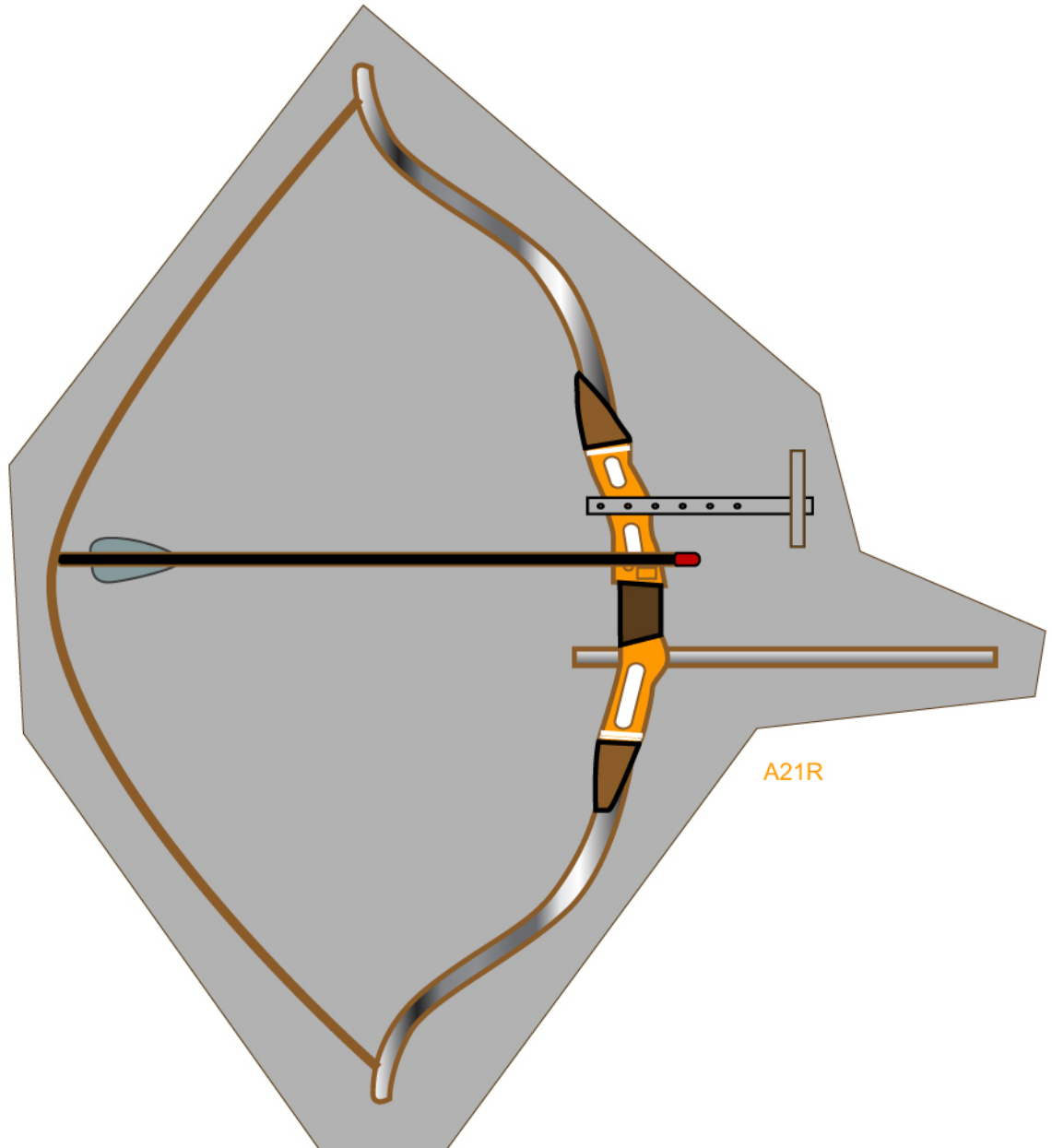


A18



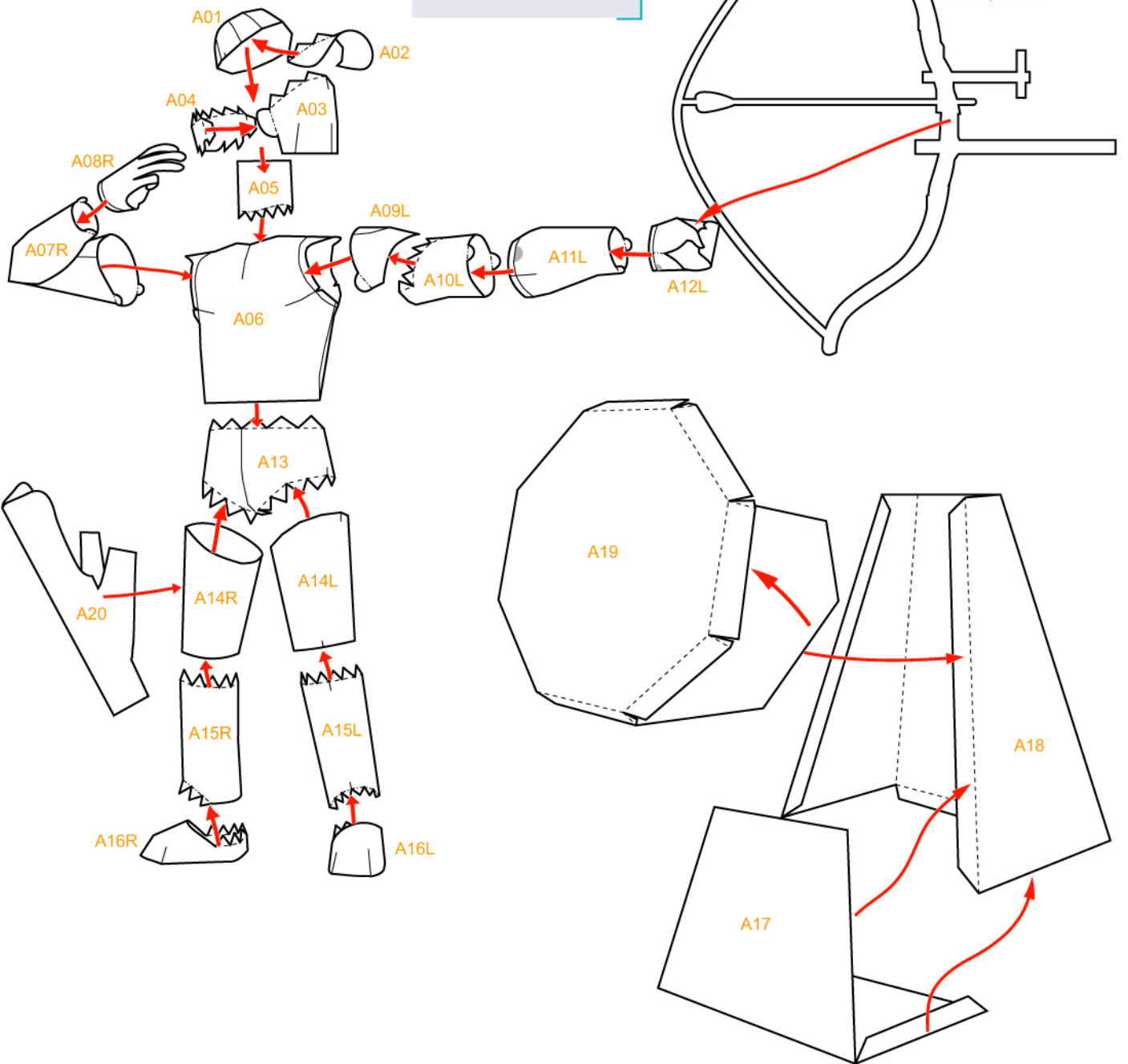
A19





# 組合說明

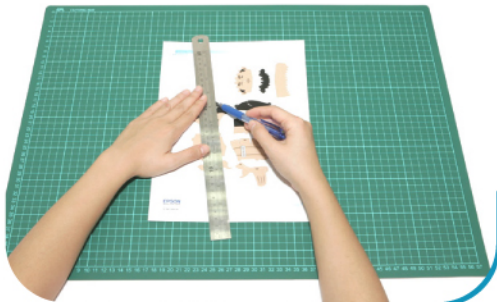
- - - 山折線  
 - - - 谷折線  
 ✕ 切除部分





製作步驟

1



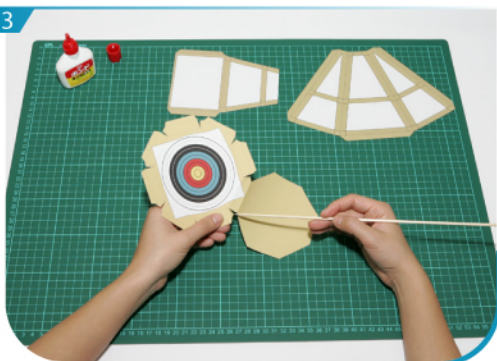
用沒有墨水的原子筆或鐵筆劃一下摺線。

2



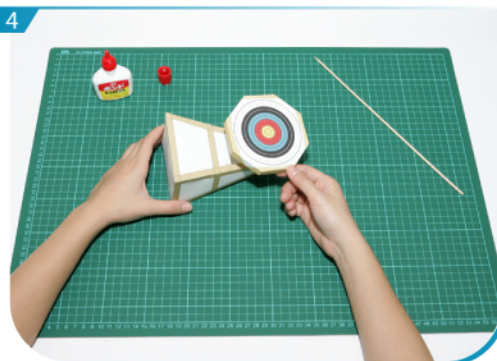
沿線剪出所有組件。為免混淆，可先在組件背面劃上記號。

3



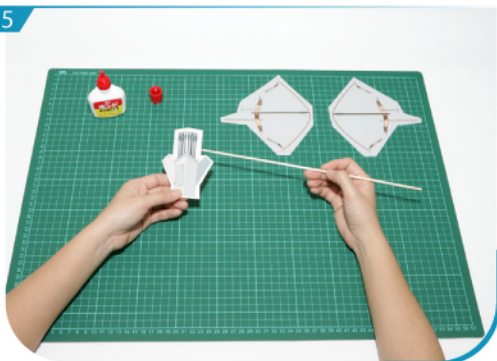
先把A19摺疊貼好；及後把A17及A18黏合待用。

4



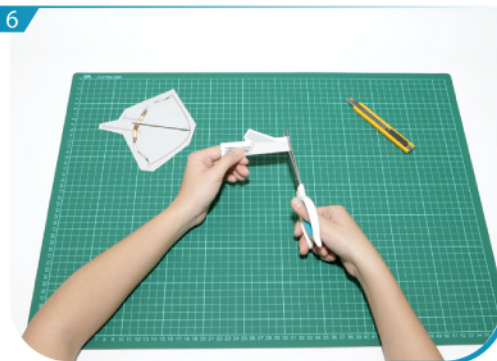
再把A18及A19黏合，箭靶部份即成。

5



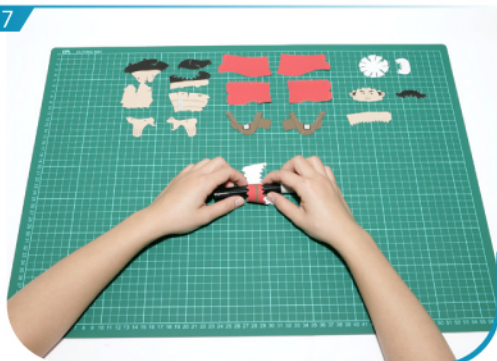
先把A20摺疊貼好；及後把A21L及A21R黏合待用。

6



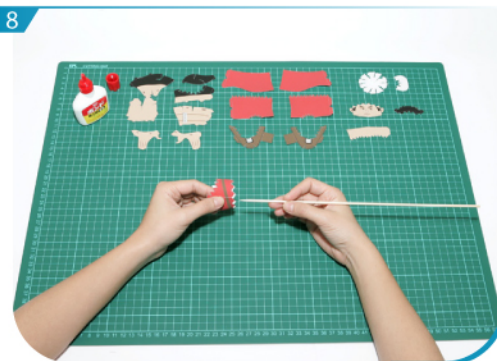
再將A20及A21沿邊緣剪出，再用剃刀挖空弓箭待用。

7

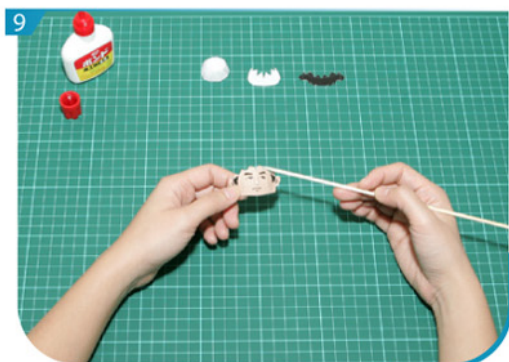


用圓柱型的筆把A01、A03、A04、A05、A07R、A08R、A09L、A10L、A11L、A12L、A13、A14L、A14R、A15L及A15R先捲一下。

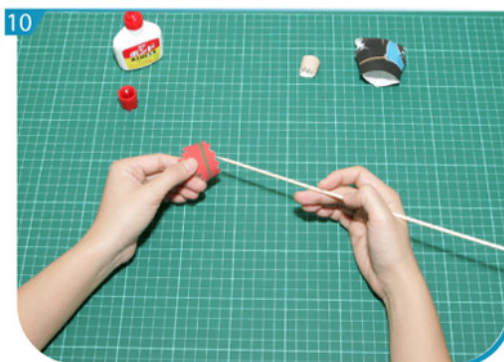
8



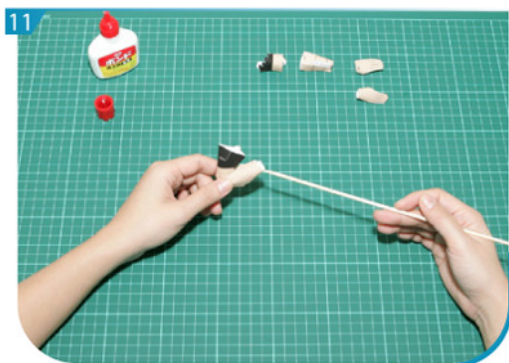
將A01、A03、A05、A06、A07R、A08R、A09L、A10L、A11L、A12L、A13、A14L、A14R、A15L、A15R、A16L及A16R各自摺疊貼好待用。



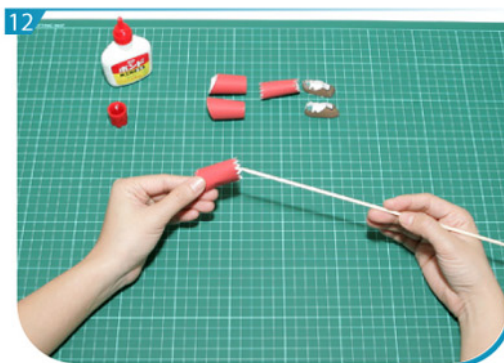
把A01、A02、A03及A04黏合，成為頭部。



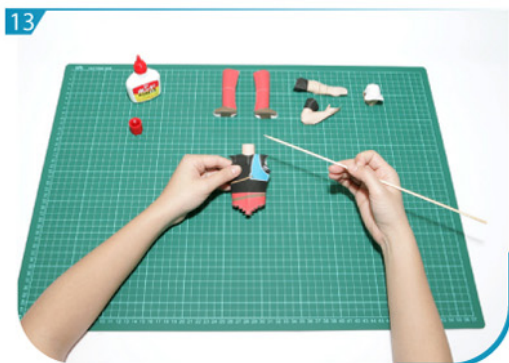
按組合說明，把A05、A06及A13黏合，成為身體部份。



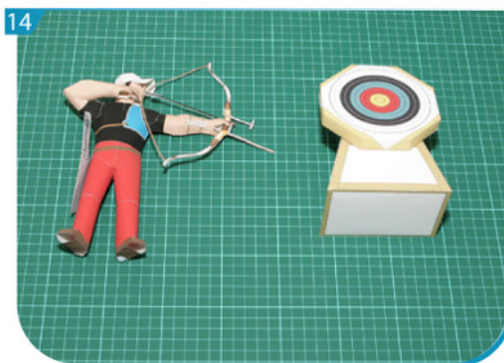
按組合說明，把A07R及A08黏合，成為右手；再把A09L、A10L、A11L及A12L黏合，成為左手。



按組合說明，把A14L、A15L及A16L黏合，成為左腳部份；把A14R、A15R及A16R黏合，成為右腳部份。



最後按組合說明，並把頭部、身體部份、左手、右手、左腳及右腳黏合，再把A20和A21貼在選手上。



英偉的射箭選手就在大家眼前出現。